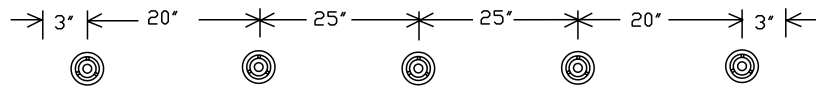
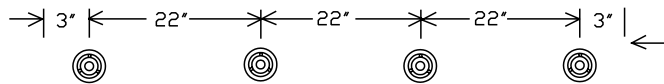


BORDERBRITE MOUNTING BUTTON SPACING

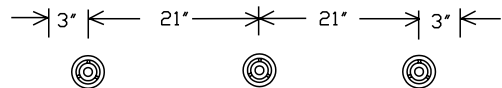
7 to 8 FOOT SECTION



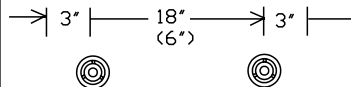
5 to 6 FOOT SECTION



3 to 4 FOOT SECTION



1 to 2 FOOT SECTION (1 FOOT SECTION)



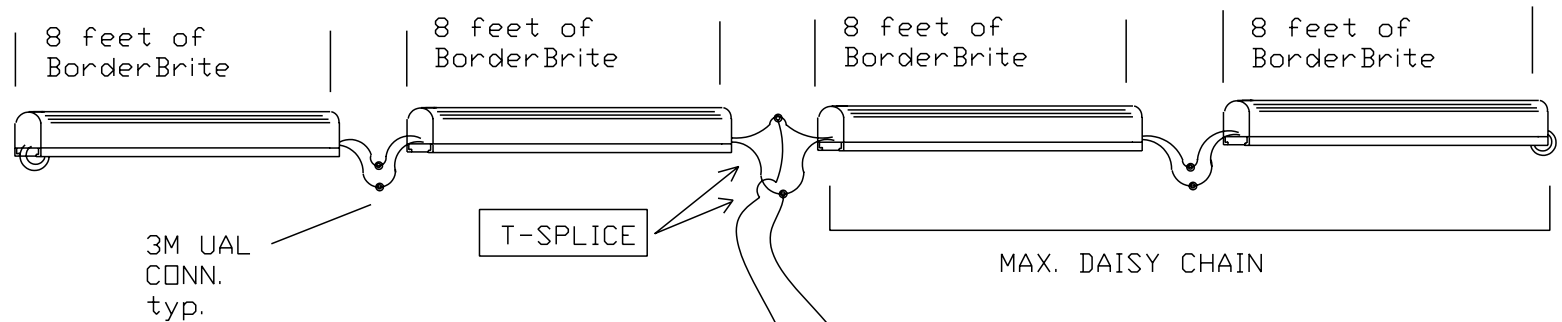
WIRE GAUGE

(WIRES FROM BORDERBRITE TO TRANSFORMER)

LENGTH OF WIRE	WIRE GAUGE
UPTO 20 FEET	18 GA.
20 TO 45 FEET	16 GA.
45 TO 80 FEET	14 GA.
OVER 80 FEET	12 GA.

DURALED LIGHTING TECHNOLOGIES

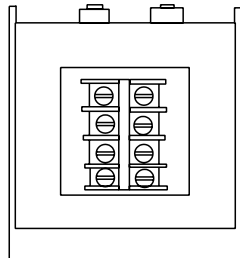
BORDERBRITE-TYPICAL WIRING LAYOUT



TRANSFORMER

4 TERMINAL BLOCKS -- 12v

3 TERMINAL BLOCKS -- 24v



Transformer (C2240)	12 v		24v	
	Min	Max.	Min.	Max.
Footage				
per transformer	2 lf	128 lf	2 lf	60 lf
per terminal block	2 lf	32 lf	2 lf	20 lf
per daisy chain	2 lf	16 lf	2 lf	16 lf