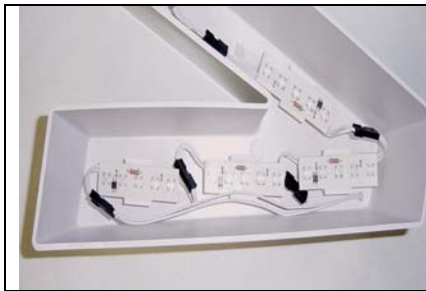




Letterbrite Installation Procedures

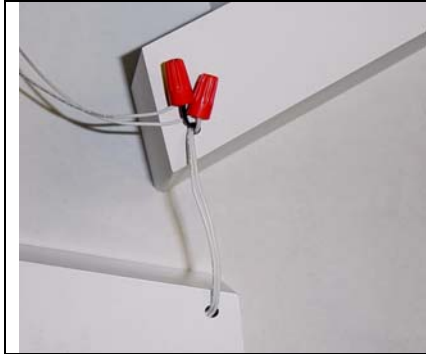
| | |
|--|---|
| | <p>Step 1 Layout letters to be populated on flat surface.</p> <p>Line(s) of LED per stroke are determined as 1 line every 4" stroke, 2 lines of LED for stroke that over 4" under 8" and so on.</p> |
| | <p>Step 2 Place the LetterBrite pieces in the letter can on the back surface wherever possible to decide the footage and the best possible way to populate for the letter.</p> <p>Place LetterBrite in the middle of the stroke if only 1 line is required. Place LetterBrite 1.5" away from stroke edges if more than 1 line is required.</p> |
| | <p>Step 3 Clip LED Modules on to clips and apply double sided tape on the back of the clip.</p> <p>Sheet metal screw or pop rivet is also suitable for securing clips in letters if extra security is desired.</p> |
| | <p>Step 4 Connect LED modules end to end by provided connectors. (Plug & Play)</p> |
| | <p>Step 5 Remove backing from double sided VHB tape and press LED modules firmly into letter can as planned in step 2.</p> <p>Clean taping surface before proceed step 5</p> |



Step 6

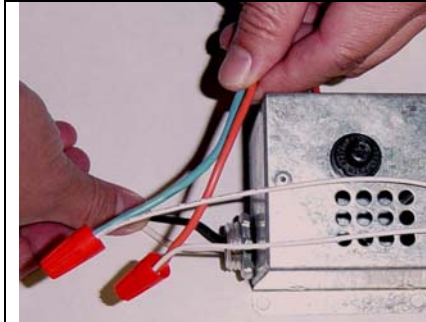
Connect only one end of a chain to power source.

For best result, connect two nearest equal footage daisy chains to transformer terminal according to transformer specification. Such as 13ft chain + 12 ft chain of maximum 25 ft. for each 12V's terminal.



Step 7

If necessary, daisy chain could be formed from next available letter.

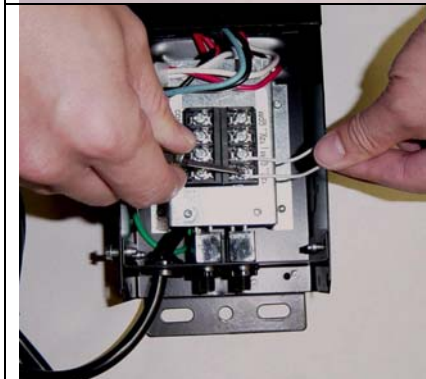


Step 8

601-12 Transformer 12V 60W, Max. 25 ft

601-24 Transformer 24V 72W, Max. 20 ft

Secondary (output) wires are color coded as Blue and Red. No polarity matching is required.



C2240-12 Transformer 12V 250W, Max. 100 ft
Four terminals, 25 ft max per terminal

C2240-24 Transformer 24V 250W, Max. 60 ft
Three terminals, 20 ft max per terminal.

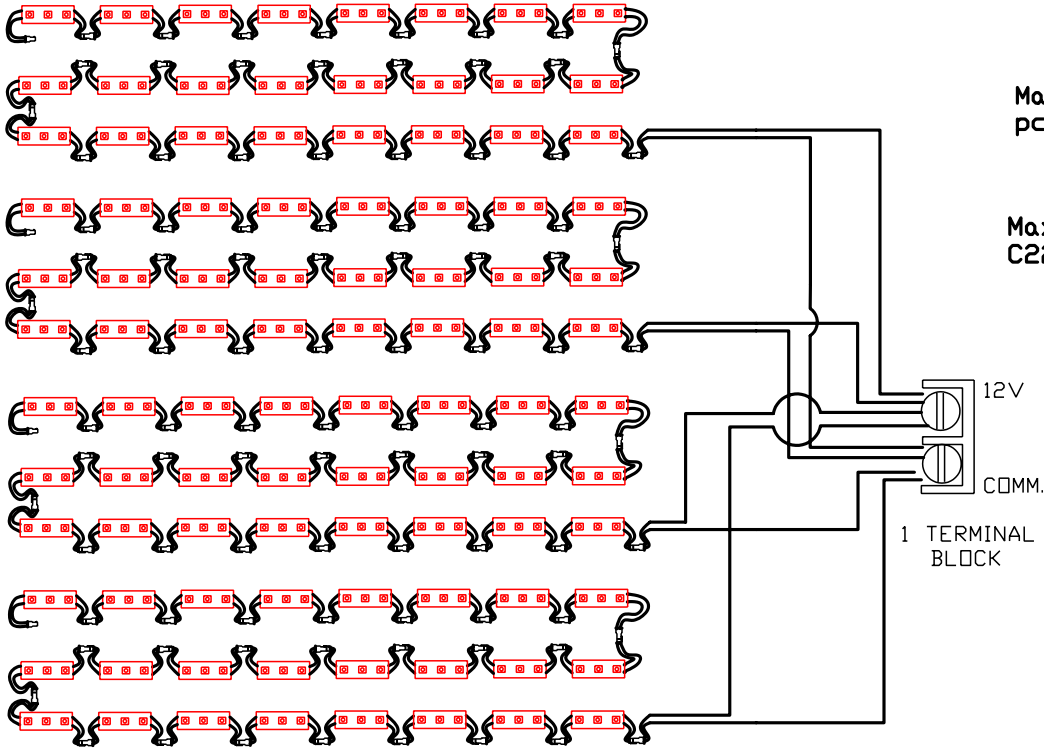
Provided screw down terminal block is divided into three or four terminals, each terminal is marked as 12V and GND. No polarity matching is required.

Note:

For Technical Support Call : (949) 753-0162

DURALED LIGHTING TECHNOLOGIES, CORP.

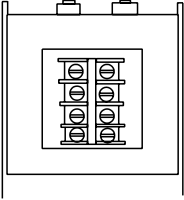
C2240-12 & E-MODULE WIRING INSTRUCTIONS



Max. 96 pcs of E-Modules (4 sets of 24 pcs Daisy Chains) for 1 terminal block.

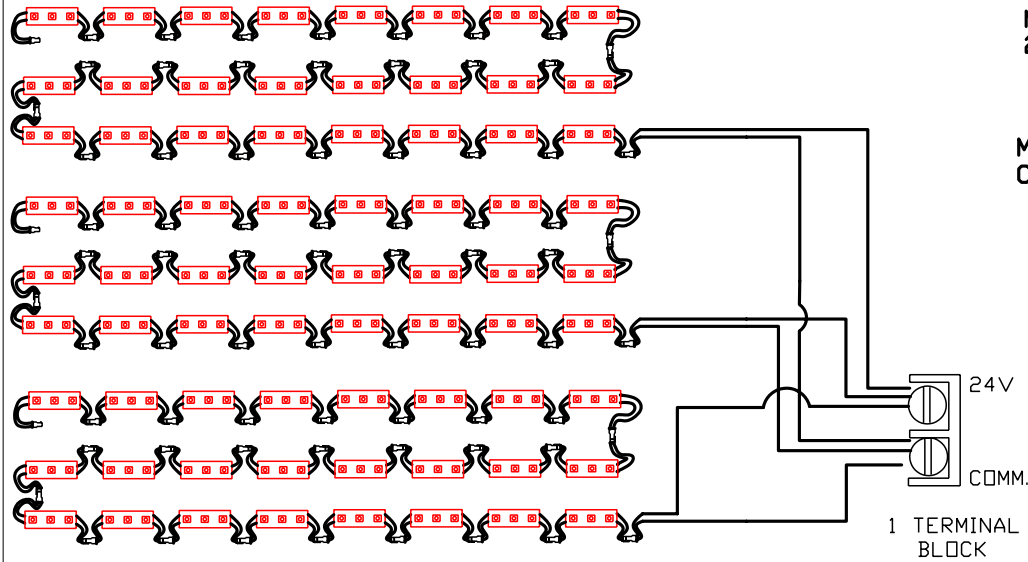
Max. 384 pcs of E-Modules for 1 unit of C2240-12

12V
TRANSFORMER
4 TERMINAL
BLOCKS



DURALED LIGHTING TECHNOLOGIES, CORP.

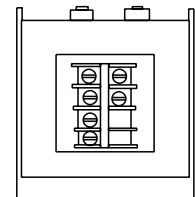
C2240-24 & E-MODULE WIRING INSTRUCTIONS

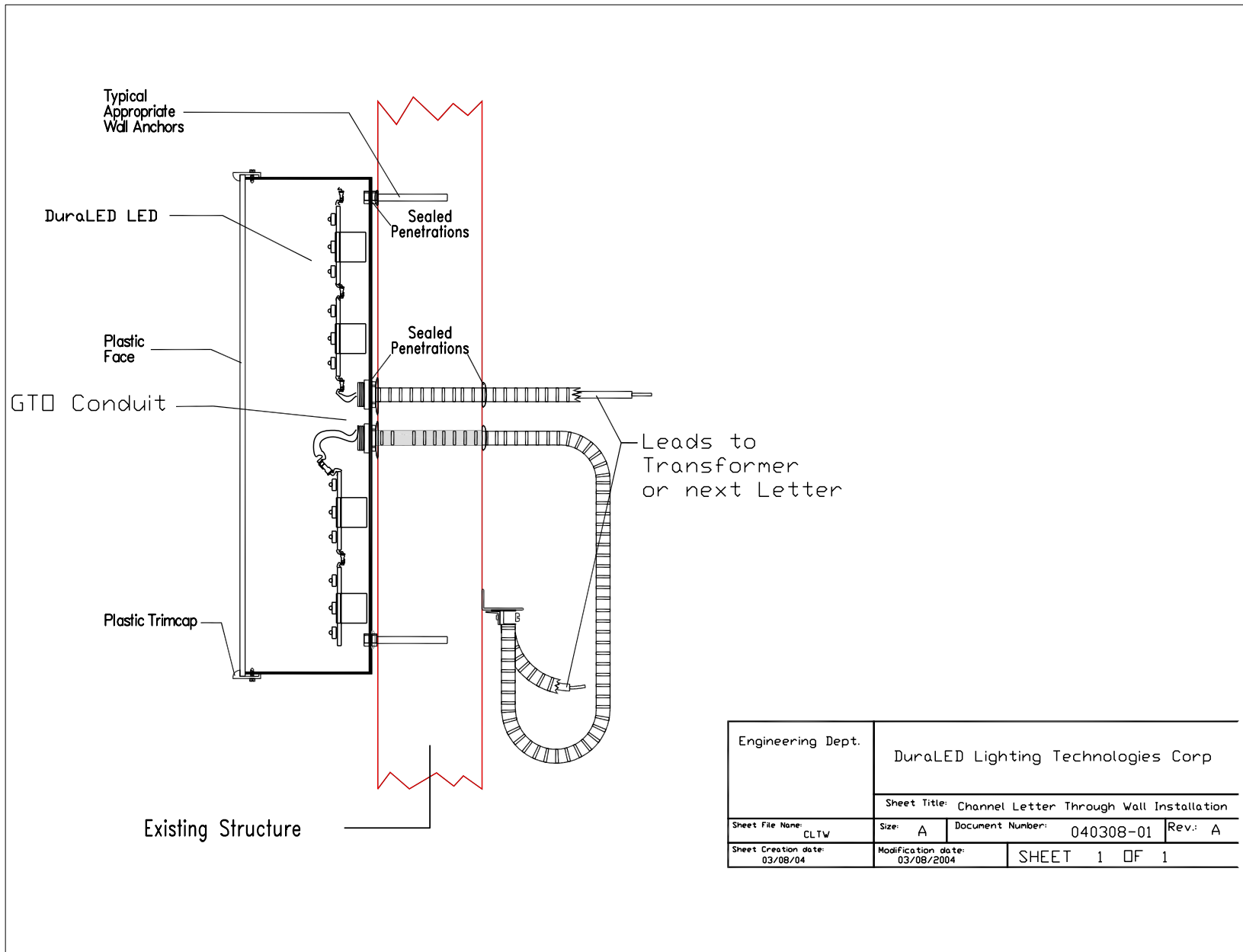


Max. 72 pcs of 24V E-Modules (3 sets of 24 pcs Daisy Chains) for 1 terminal block.

Max. 216 pcs of E-Modules for 1 unit of C2240-24

24V
TRANSFORMER
3 TERMINAL
BLOCKS





| | | | |
|---|----------------------------------|------------------------------------|---------|
| Engineering Dept. | | DuraLED Lighting Technologies Corp | |
| Sheet Title: Channel Letter Through Wall Installation | | | |
| Sheet File Name: CLTW | Size: A | Document Number: 040308-01 | Rev.: A |
| Sheet Creation date: 03/08/04 | Modification date: 03/08/2004 | SHEET 1 OF 1 | |